

# MOTIF XS

## QUICK SETUP GUIDE: Firewire/mLAN MACINTOSH OSX Cubase AI4 / Studio Manager / Motif XS Editor / Mac OSX

### Install

- Install "Cubase AI4" on your Mac. Update to the latest version at [www.steinberg.net](http://www.steinberg.net)

### Download

- \_ The Motif XS Operating System Updater v1.10 (or later)
- \_ "Studio Manager" v2.3.0 (or later) should be installed on your computer.
- \_ The Motif XS Editor v1.1.0 (or later) should be installed on your computer
- \_ The "Extensions for Steinberg" v1.4.0 (or later)
- \_ The Motif XS AI driver v1.1.3 (or later).

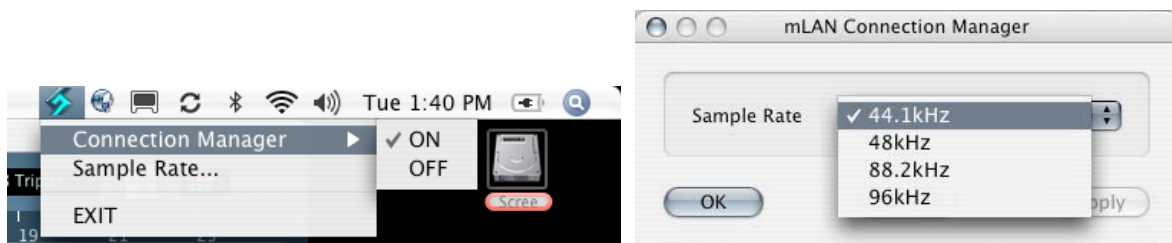
[http://www.yamahasyth.com/download/motif\\_xs.html](http://www.yamahasyth.com/download/motif_xs.html)

### Connect via Firewire

- Make your Firewire connection between your Motif XS and your computer **prior** to powering up the units.
- Once you have made the connection you can power up the computer.
- Set the Motif XS to MIDI IN/OUT = mLAN. Here's how:
  - Press [UTILITY]
  - Press [F5] CONTROL
  - Press [SF2] MIDI
  - Set MIDI IN/OUT = mLAN
  - Press [STORE] to write this to your Flash ROM

### Engage the AI Driver

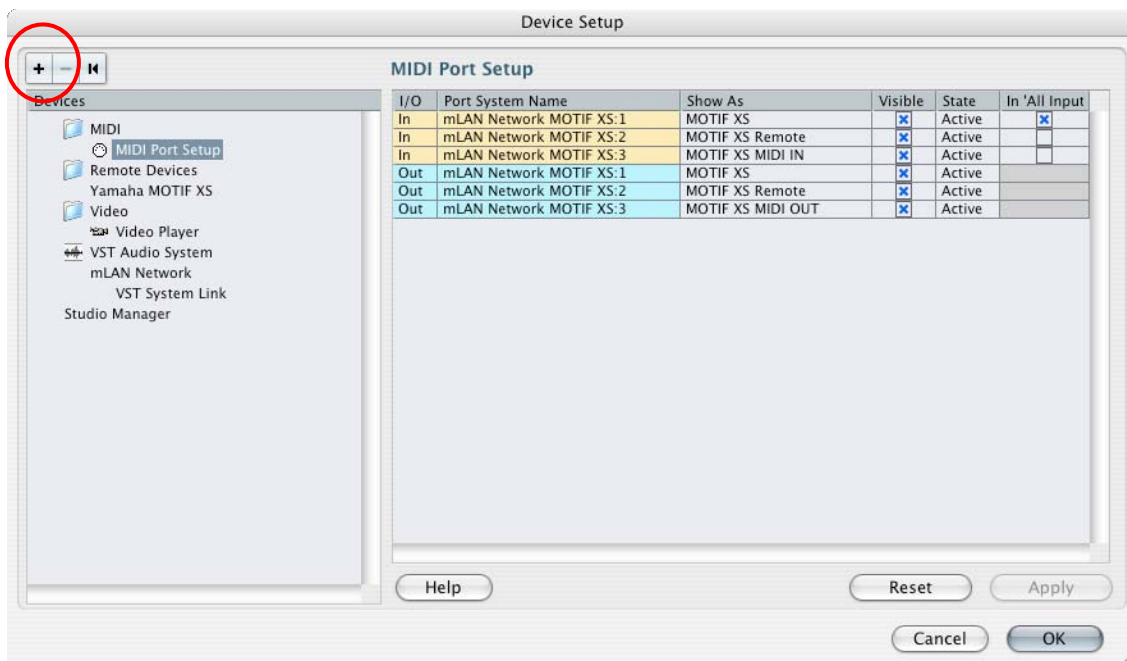
Once you have connected the Motif XS to your Mac via firewire you need to turn on the Connection manager. The AI Driver is designed to be exceptionally simple and easy to set up. It appears as an icon in the upper right hand corner of the OSX desktop. Clicking and hovering on the icon allows you to turn the connection on, and once it is on it is persistent and will engage automatically when your Motif is connected. Very cool! Notice there is the connection manager and the sample rate. You can connect at 44.1, 48, 88.2 and 96 kHz sample rates. Select the one you wish to use (realizing that the higher the sample rate, the greater the file size. Most projects are just fine at 44.1kHz, which is CD quality).



**Note:** Do you want your system sounds and computer audio going through the mLAN network? When you want to listen to iTunes or the audio from a movie through the mLAN firewire port, go to System Preferences/Sound and select "mLAN Network" as you audio device (or in case you do not want to hear system sounds through the mLAN network, select "Internal Speakers" as you output). You can also view audio and midi devices in your system via the Audio MIDI Setup utility (Located in the Utility Folder).

### Launch Cubase AI4

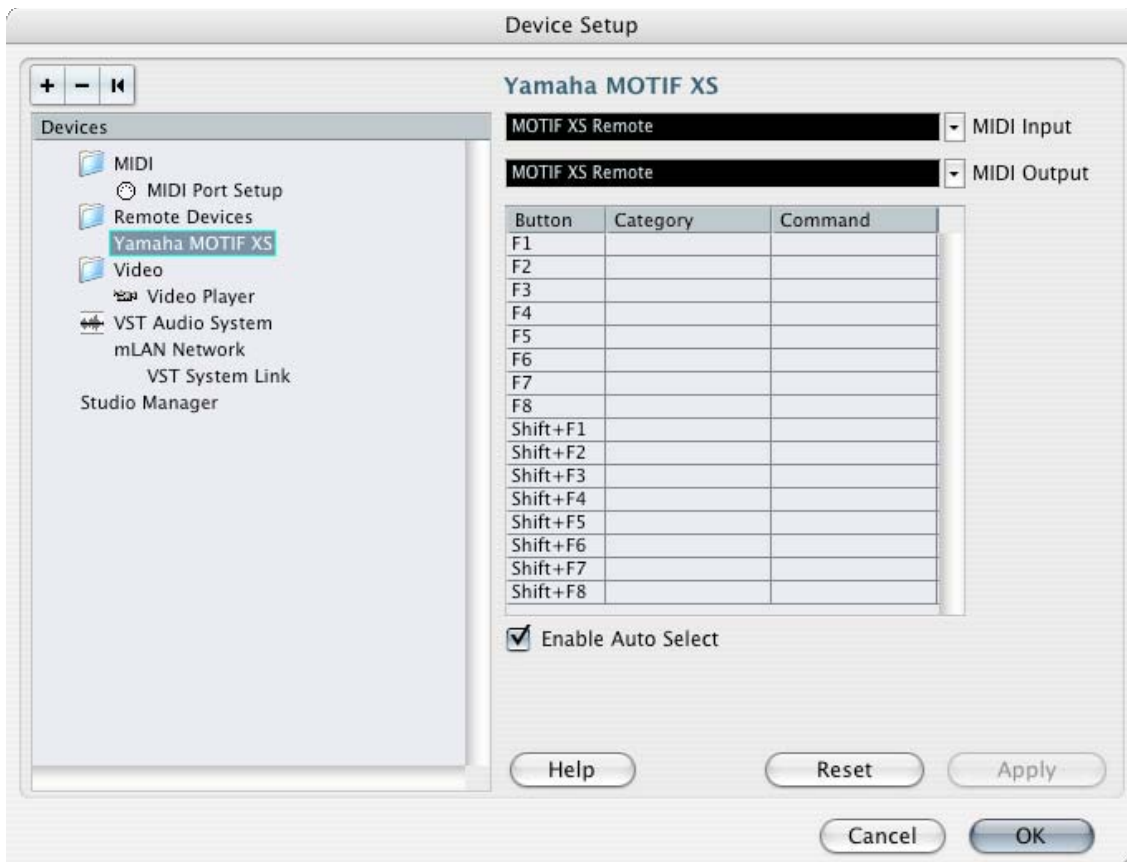
- During launch Cubase will detect the AI driver and ask if you want to use ASIO mLAN. Answer Yes.
- Once Cubase opens click DEVICES
- Select DEVICE SETUP
- Under the "MIDI" folder highlight "MIDI PORT SETUP"
- You should see your Motif XS: Example below uses a Motif XS8
- Select **only** "Motif XS" as the "In 'All Inputs"



- Under the "Remote Devices" folder highlight "Yamaha MOTIF XS"

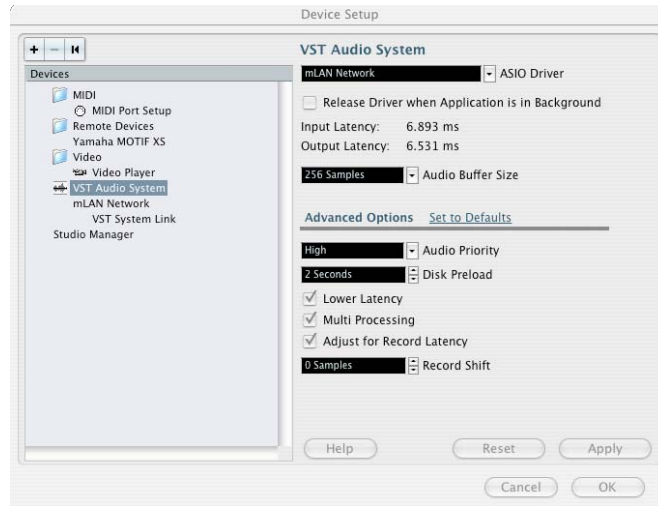
If it does not appear click on the big "+" symbol in the upper left (below circled in red) and ADD the "Yamaha Motif XS" device.

- Set it to Port 2 or it may say "MOTIF XS Remote" for both MIDI INPUT and MIDI OUTPUT



Below is how you will want to set your VST Audio System. The mLAN network is also your audio interface when using the firewire out. Under the "VST Audio System" verify this selection (as you can see in this example below, "mLAN Network" is the driver selected). If it is not, go ahead and select it.

- Click APPLY
- Click OK



**Launch the STUDIO MANAGER**

- On the Cubase Toolbar click on DEVICES
- Select STUDIO MANAGER (shown at left).

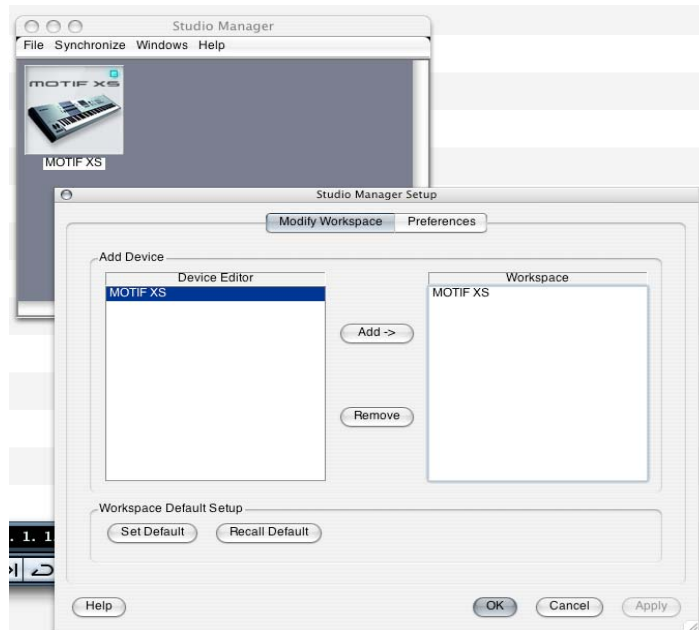
This will launch the Studio Manager host application within Cubase.

- Go to FILE > SETUP on the Studio Manager toolbar.

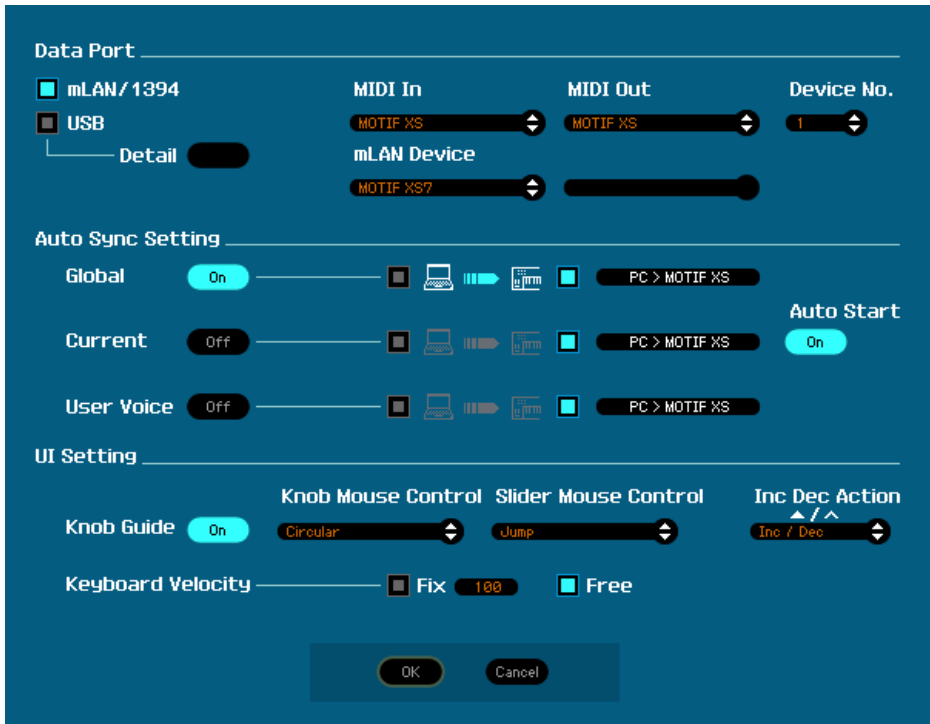
You want to "ADD" the "MOTIF XS" editor to your Workspace. There will be a list of Editors on the left side of the dialog box; {ADD} in the middle and your workspace on the right side of the dialog box (shown below).

- Click APPLY
- Click OK

This will place the Motif XS icon in your Studio Manager "Workspace". The default setting for the Studio Manager Preferences is to "Automatically synchronize on file load". This is exactly what you want to happen. As we will learn you are given an option to select the direction of synchronization on a per launch basis.



## Setup the Motif XS Editor



- Click on FILE > SETUP on the Motif XS Editor toolbar

Here you want to setup the communication between the Motif XS and the Editor.

Select **mLAN/1394** as the DATA PORT

Make settings:

**MIDI In:**  
Motif XS

**MIDI Out:**  
Motif XS

**mLAN Device:**  
Yamaha Motif XS7

Of course if you have a Motif XS6 or Motif XS8 your unit will be identified.

Next you make a decision about the direction of communication. There are two things to consider:

- 1) When you open a New Project in Cubase, how do you want the Editor to behave?
- 2) When you open a previously saved Project, how do you want the Editor to behave?

Typically, when you create a New Project you will want the Editor to clear a new MIX for you. Therefore you will want to have data sent FROM the Editor TO the Motif XS.

When you are restoring a previously saved Cubase Project you will want the Editor to send your saved data back to the Motif XS. Therefore you will want to have data sent FROM the Editor TO the Motif XS.

Set the **Auto Sync Setting** to:

### CURRENT (ON) = PC > Motif XS

This particular setting is so that the Total Recall function will send the Current MIX **from** the computer **to** the Motif XS when I open a Cubase Project. Restoring my Mix to my Motif XS. Cool! In general, you set this for when you are recalling a Project – if you want to transmit or receive data you will use the BULK Function explained below.

I have the **VOICE** option set to OFF, as I don't often need to reload all the User Voices (but you can set this as your prefer). If set to ON, then the Editor can restore all your USER1, USER2, USER3 and USER Drum Kit Voices to your Motif XS each time you open a Project or start new one. It is your choice.

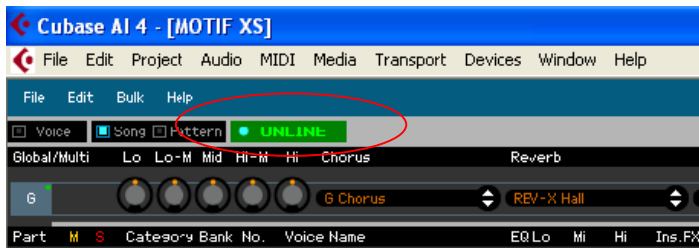
**Auto Start** is ON

Set the **USER INTERFACE SETTING** as you prefer. The Keyboard Velocity function when set to "FREE" will change how loud the note plays by where on the keyboard icon KEY you click. This is pretty cool...

- Click OK

On the main Motif XS Editor screen you want to make sure that the Editor is ONLINE. A bright blue dot appears next to ONLINE when you are communicating.

In the left upper corner you will see the Voice mode, SONG mode, PATTERN mode and the "ONLINE" button. Communication is bi-directional and simultaneous so selecting the mode here will change your hardware and vice versa.



### USING the ONLINE/OFFLINE function

The ONLINE option has 3 status conditions. It will read either:

- \*ONLINE w/blue dot – This means you are communicating and all is well
- \*OFFLINE w/blue dot – you are temporarily offline but all is well
- OFFLINE – you have trouble. Please check your connections

The OFFLINE w/blue dot is important because you will at some point need to make changes on the hardware and **not** have the software follow you. This can occur when you are looking for a SONG or PATTERN already in the Motif XS – the Editor will attempt to synchronize each time you scroll through a song. Therefore it is useful to click this option when you want to temporarily break communication. You can click ON and OFFLINE as necessary.

If you go to [VOICE] mode or to [PERFORMANCE] mode on the Motif XS hardware front panel, then the Motif XS Editor will go temporarily offline. (\*OFFLINE w/blue dot).

On the Toolbar of the Motif XS Editor you will see the **BULK** option. This is what you use to request a bulk to or from the Motif XS. You can select the Current MIX, and any of the USER Banks or ALL of the USER Banks. Do not change your preference in the FILE > SETUP > AUTO SYNC SETTING – when you need to send or receive data from the Motif XS use this BULK option.

BULK > DATA SYNC

### Setup a NEW PROJECT in Cubase: Making your own Template (highly recommended).

- In Cubase AI4 click on the FILE option
- Select "NEW PROJECT"
- Select "EMPTY"

You can use any of the pre-made Templates or you can create your own. Ultimately, you will want to create your own once you develop a preference of how you like to work. Cubase will ask you to select a directory for your Project. You can "create" a folder or simply target one you have made previously.

Next you will create a track layout. This will be your own personal preference. For our example we will create a Track setup with 8 MIDI Tracks (you can set as many as you require). Remember you can easily add tracks or remove tracks at any time in Cubase by simply right clicking and using the ADD TRACK or REMOVE TRACK option.

- Right click and select "ADD TRACK" > MIDI
- Make the Track Count 8
- Click OK

Each of the eight tracks will be set to "All MIDI Input" and as we know this is the Motif XS port 1. Each of the eight tracks will be routed out to the "Yamaha Motif XS", and each will be on a successively higher MIDI channel. Verify this.

- Next click on FILE > SAVE AS TEMPLATE...
- Name the template something descriptive.

I named mine "**Motif XS mLAN 8 MIDI**". Here's why... It reminds me that this template is for when I'm working with the Motif XS (in my studio I need this information). I include mLAN in the description because this template will configure my connections via mLAN; I have a separate template for when I am working with the USB connection. The "8 MIDI" reminds me how many tracks are in this template and what type of tracks. You may want to customize your Template further by specifying SONG or PATTERN mode as your Studio Manager EDITOR condition.

### Try out your TEMPLATE

- Click WINDOW and select "Close All"
- Go to FILE > New Project...
- Click on your new Template
- Select a directory for this project
- Click OK to launch your Template

Your mLAN connections, your REMOTE Settings, your audio interface settings will persist; Cubase will launch Studio Manager, recall the hardware configuration, recall the MIDI connections, and recall the Current Mix and Voices if you included them. It will then ask you if want to restore this to your hardware. Why this extra step? Because at some point you may actually start a project in the Motif XS – say you have a quick idea and want to get it down fast. Later you say I'd like to continue my work in Cubase rather than having the Editor automatically blow away your hardware settings, you get this screen that lets you verify that you want to go FROM or TO the Hardware. Very useful... if you have done a setup in the Motif XS and you want to have the Editor capture it: simply select 'FROM HARDWARE' option. If you want to send your basic start-up template select the 'TO HARDWARE' option.

You can customize these instructions to your own preferences. Perhaps you always start with a particular Drum Kit, Bass sound and Keyboard sound; you can make your TEMPLATE that includes the Motif XS Editor with the Voices you like already programmed.

**Advantage and Conclusion**

The **Studio Connection: Recall** protocol allows you to store and recall your external hardware settings in your Cubase Project File. Studio Manager will memorize what hardware you were using on a project, it will store not only the Voice list but also the entire mix. That is, every parameter you use, and every voice in your Motif XS, per project.

Cubase AI 4  
Cubase Essential 4  
Cubase Studio 4  
Cubase 4